

Advanced Arpeggios for Recorders in F

Common Chord of C major



Common Chord of G major



Common Chord of D major



Common Chord of A major



Common Chord of F major



Common Chord of B♭ major



Common Chord of E♭ major



Advanced Arpeggios for Recorders in F

Common Chord of E major



Musical notation for the E major chord arpeggio. The key signature is three sharps (F#, C#, G#). The melody starts on E4 and follows the sequence: E4-F#4-G#4-A4-B4, B4-A4-G#4-F#4-E4, E4-F#4-G#4-A4-B4, B4-A4-G#4-F#4-E4, E4-F#4-G#4-A4-B4, B4-A4-G#4-F#4-E4, and ends with a whole note E4.

Common Chord of B major



Musical notation for the B major chord arpeggio. The key signature is three sharps (F#, C#, G#). The melody starts on B3 and follows the sequence: B3-C#4-D#4-E4-F#4, F#4-E4-D#4-C#4-B3, B3-C#4-D#4-E4-F#4, F#4-E4-D#4-C#4-B3, B3-C#4-D#4-E4-F#4, F#4-E4-D#4-C#4-B3, and ends with a whole note B3.

Common Chord of F# major



Musical notation for the F# major chord arpeggio. The key signature is four sharps (F#, C#, G#, D#). The melody starts on F#4 and follows the sequence: F#4-G#4-A4-B4-C#5, C#5-B4-A4-G#4-F#4, F#4-G#4-A4-B4-C#5, C#5-B4-A4-G#4-F#4, F#4-G#4-A4-B4-C#5, C#5-B4-A4-G#4-F#4, and ends with a whole note F#4.

Common Chord of C# major



Musical notation for the C# major chord arpeggio. The key signature is four sharps (F#, C#, G#, D#). The melody starts on C#5 and follows the sequence: C#5-D#5-E5-F#5, F#5-E5-D#5-C#5, C#5-D#5-E5-F#5, F#5-E5-D#5-C#5, C#5-D#5-E5-F#5, F#5-E5-D#5-C#5, and ends with a whole note C#5.

Common Chord of A♭ major



Musical notation for the A-flat major chord arpeggio. The key signature is three flats (Bb, Eb, Ab). The melody starts on A3 and follows the sequence: A3-Bb3-Cb4-Db4-Eb4, Eb4-Db4-Cb4-Bb3-A3, A3-Bb3-Cb4-Db4-Eb4, Eb4-Db4-Cb4-Bb3-A3, A3-Bb3-Cb4-Db4-Eb4, Eb4-Db4-Cb4-Bb3-A3, and ends with a whole note A3.

Common Chord of D♭ major



Musical notation for the D-flat major chord arpeggio. The key signature is four flats (Bb, Eb, Ab, Db). The melody starts on D3 and follows the sequence: D3-Eb3-Fb4-Gb4-Ab4, Ab4-Gb4-Fb4-Eb3-D3, D3-Eb3-Fb4-Gb4-Ab4, Ab4-Gb4-Fb4-Eb3-D3, D3-Eb3-Fb4-Gb4-Ab4, Ab4-Gb4-Fb4-Eb3-D3, and ends with a whole note D3.

Common Chord of G♭ major



Musical notation for the G-flat major chord arpeggio. The key signature is five flats (Bb, Eb, Ab, Db, Gb). The melody starts on G2 and follows the sequence: G2-Ab2-Bb3-Cb4-Db4, Db4-Cb4-Bb3-Ab2-G2, G2-Ab2-Bb3-Cb4-Db4, Db4-Cb4-Bb3-Ab2-G2, G2-Ab2-Bb3-Cb4-Db4, Db4-Cb4-Bb3-Ab2-G2, and ends with a whole note G2.

Common Chord of C♭ major



Musical notation for the C-flat major chord arpeggio. The key signature is five flats (Bb, Eb, Ab, Db, Gb). The melody starts on C3 and follows the sequence: C3-Db3-Eb4-Fb4-Ab4, Ab4-Fb4-Eb4-Db3-C3, C3-Db3-Eb4-Fb4-Ab4, Ab4-Fb4-Eb4-Db3-C3, C3-Db3-Eb4-Fb4-Ab4, Ab4-Fb4-Eb4-Db3-C3, and ends with a whole note C3.

Common Chord of A minor **Advanced Arpeggios for Recorders in F**



Common Chord of E minor



Common Chord of B minor



Common Chord of F# minor



Common Chord of D minor



Common Chord of G minor



Common Chord of C minor



Advanced Arpeggios for Recorders in F
Common Chord of C# minor



Common Chord of G# minor



Common Chord of D# minor



Common Chord of A# minor



Common Chord of F minor



Common Chord of Bb minor



Common Chord of Eb minor



Common Chord of Ab minor



Advanced Arpeggios for Recorders in F

Dominant Seventh Chords

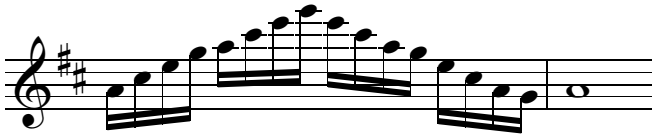
Dominant Seventh of C



Dominant Seventh of G



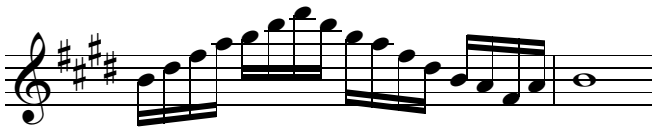
Dominant Seventh of D



Dominant Seventh of A



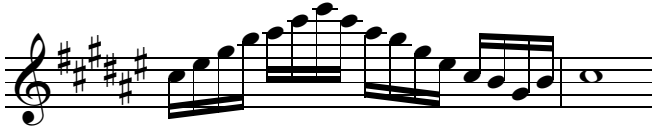
Dominant Seventh of E



Dominant Seventh of B



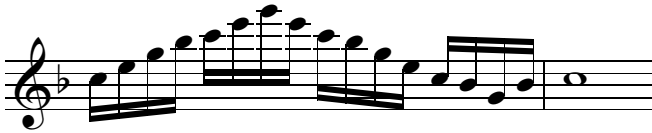
Dominant Seventh of F#



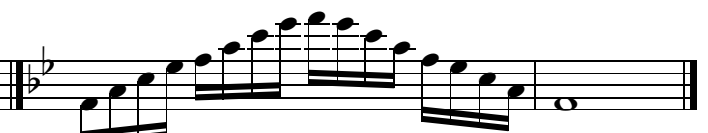
Dominant Seventh of C#



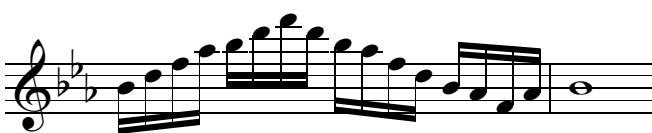
Dominant Seventh of F



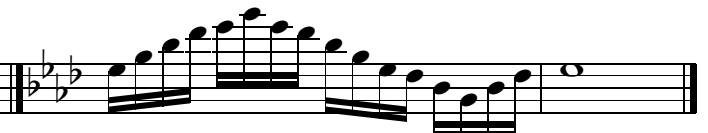
Dominant Seventh of Bb



Dominant Seventh of Eb



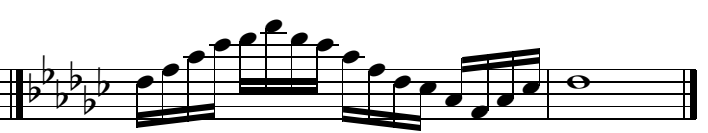
Dominant Seventh of Ab



Dominant Seventh of Db



Dominant Seventh of Gb



Dominant Seventh of Cb



Advanced Arpeggios for Recorders in F
Diminished Seventh Chords

Diminished Seventh of C

Musical notation for the Diminished Seventh of C, showing a descending arpeggio in treble clef.

Diminished Seventh of G

Musical notation for the Diminished Seventh of G, showing a descending arpeggio in treble clef.

Diminished Seventh of D

Musical notation for the Diminished Seventh of D, showing a descending arpeggio in treble clef.

Diminished Seventh of A

Musical notation for the Diminished Seventh of A, showing a descending arpeggio in treble clef.

Diminished Seventh of E

Musical notation for the Diminished Seventh of E, showing a descending arpeggio in treble clef.

Diminished Seventh of B

Musical notation for the Diminished Seventh of B, showing a descending arpeggio in treble clef.

Diminished Seventh of F#

Musical notation for the Diminished Seventh of F#, showing a descending arpeggio in treble clef.

Diminished Seventh of C#

Musical notation for the Diminished Seventh of C#, showing a descending arpeggio in treble clef.

Diminished Seventh of F

Musical notation for the Diminished Seventh of F, showing a descending arpeggio in treble clef.

Diminished Seventh of Bb

Musical notation for the Diminished Seventh of Bb, showing a descending arpeggio in treble clef.

Diminished Seventh of Eb

Musical notation for the Diminished Seventh of Eb, showing a descending arpeggio in treble clef.

Diminished Seventh of Ab

Musical notation for the Diminished Seventh of Ab, showing a descending arpeggio in treble clef.

Diminished Seventh of Db

Musical notation for the Diminished Seventh of Db, showing a descending arpeggio in treble clef.

Diminished Seventh of Gb

Musical notation for the Diminished Seventh of Gb, showing a descending arpeggio in treble clef.

Diminished Seventh of Cb

Musical notation for the Diminished Seventh of Cb, showing a descending arpeggio in treble clef.